

Expertise & Service



BEARINGS · POWER TRANSMISSION
ENGINEERED SOLUTIONS

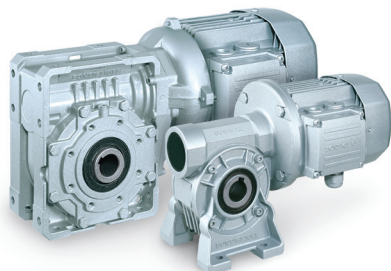
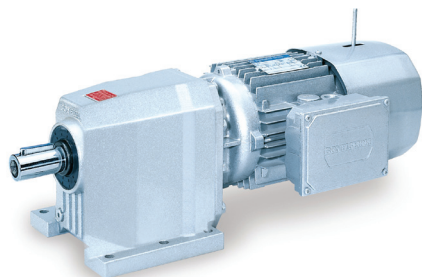
Australia's largest distributor of bearings, power transmission and engineered solutions



C - HELICAL GEAR MOTOR

TORQUE RANGE: 45 Nm... 12.000 Nm
MECH. RATING ($n_1=1400 \text{ min}^{-1}$): 0,08 ... 213 kW
GEAR RATIOS: 2,6 ... 1481

Top torque density, product variety, extremely wide speed choice, great compactness and price effectiveness make the C series the unparalleled line of helical gear motors and speed reducers.



W / W-EP - WORM GEAR MOTOR

TORQUE RANGE: 13 Nm... 7.100 Nm
MECH. RATING ($n_1=1400 \text{ min}^{-1}$): 0,04 ... 75 kW
GEAR RATIOS: 7 ... 10000

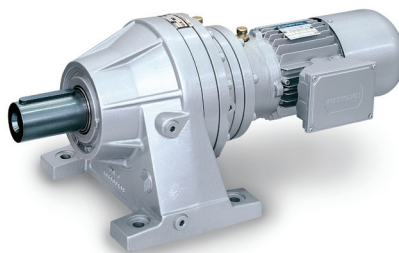
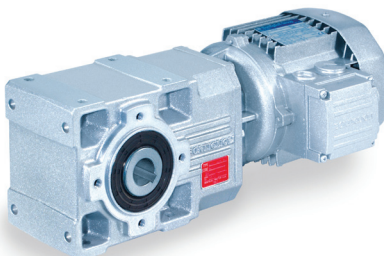
Absolute flexibility is given by the wide choice of several mounting options, shaft configurations and motor interface, all offered as standard. Also available in the enhanced protection "EP" configuration (for hostile environments), featuring food grade specifications and extra corrosion protection.



A - HELICAL BEVEL GEAR MOTOR

TORQUE RANGE: 100 Nm... 14.000 Nm
MECH. RATING ($n_1=1400 \text{ min}^{-1}$): 0,22 ... 150 kW
GEAR RATIOS: 5,4 ... 1715

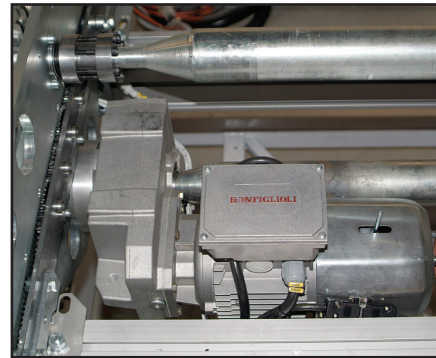
The A Helical bevel gear motor series is the first product to prove equally good in regard to efficiency and versatility within a highly competitive context, both performance- and price-wise.



300 - PLANETARY GEAR MOTOR

TORQUE RANGE: 1000 Nm... 1287000 Nm
MECH. RATING ($n_1=1500 \text{ min}^{-1}$): up to 450 kW
GEAR RATIOS: 3.4 ... 5234

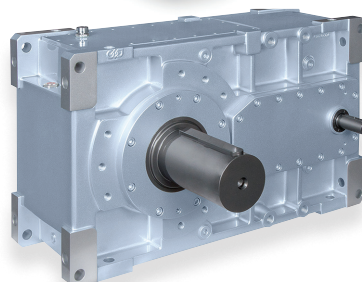
Compact, and yet extremely powerful, are the units of the 300 Planetary gear motor series. Their planetary drive train makes them the ideal choice for all the severe duty applications where shock loadings and impacts are more the rule than the exception.



F - SHAFT MOUNTED GEAR MOTOR

TORQUE RANGE: 140 Nm... 14.000 Nm
MECH. RATING ($n_1=1400 \text{ min}^{-1}$): 0,17 ... 125 kW
GEAR RATIOS: 6,4 ... 2099

No better, easier and neater installation than with a shaft mounted gear motor of the F series. Lightweight and performing, an F unit is the dependable drive for all the material handling applications.



HDP - PARALLEL SHAFT GEAR MOTOR

TORQUE RANGE: 5000 Nm... 210000 Nm
MECH. RATING ($n_1=1500 \text{ min}^{-1}$): up to 450 kW
GEAR RATIOS: 7.1 ... 500

Torque ratings consistently high, gear ratios in close progression, numerous mounting options along with compact dimensions will ease the engineering of any application.



UNLIMITED OPTIONS - YOU DESIGN - WE ASSEMBLE

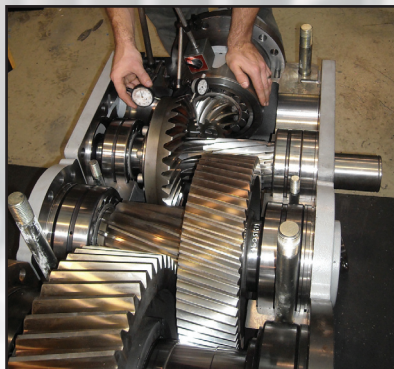


300 SERIES PLANETARY GEAR MOTOR

Size	Nominal torque [Nm]
300	1250
301	2460
303	2970
304	3960
305	5800
306	10840
307	15680
309	23240
310	34120
311	48330
313	57970
314	84000
315	105000
316	138820
317	208110
318	280580
319	476410
321	655740
323	890310
325	1287000

A POWERFUL SOLUTION TO HEAVY DUTY DRIVE NEEDS

The Trasmital 300 Series product configuration is highly versatile and 100% modular with various mounting options, gear ratios, output shafts and motor input options. All features are available for each of the 20 closely spaced frame sizes, spanning over the 1,250 - 1,286,700 Nm torque range. Finding the perfect match to any drive problem is therefore more than a wish, it is something users can safely rely on - always.



QUICK RELIABLE DELIVERIES

**All Bonfiglioli Gear Motors
are assembled right here in Australia.**

Ensuring the most competitive deliveries in Australasia we have a highly qualified team of technicians with over 100 years experience, safe-guarding assembly and quality control. In addition we are warehousing huge stock levels to further reduce delivery times.



www.bonfiglioli.com.au

For further information, contact CBC Australia Pty Limited

NEW SOUTH WALES

1/453 Victoria Street, Wetherill Park NSW 2164
T 02 9725 4555 • F 02 9725 3962

NEWCASTLE

4/585 Maitland Road, Mayfield West NSW 2304
T 02 4968 4000 • F 02 4968 4040

SOUTH AUSTRALIA

479-481 South Road, Regency Park SA 5010
T 08 8348 2100 • F 08 8348 2188

QUEENSLAND

865 Kingsford Smith Drive, Eagle Farm QLD 4009
T 07 3866 2100 • F 07 3866 2177

www.conbear.com

VICTORIA

174 Fairbairn Road, Sunshine West VIC 3020
T 03 9313 2000 • F 03 9313 2094

NORTHERN TERRITORY

Unit 4/ Lot 1544 Stuart Hwy, Winnellie NT 0820
T 08 8984 3558 • F 08 8984 4852

WESTERN AUSTRALIA

387 Victoria Road, Malaga WA 6090
T 08 6363 8220 • F 08 6363 8222

PT. CBC JAKARTA

T +62 21 2922 1488 • F +62 21 2922 1499

PT. CBC BALIKPAPAN

T +62 21 2922 1400 • F +62 21 2922 1488

Expertise & Service



BEARINGS · POWER TRANSMISSION
ENGINEERED SOLUTIONS

Australia's largest distributor of bearings, power transmission and engineered solutions